

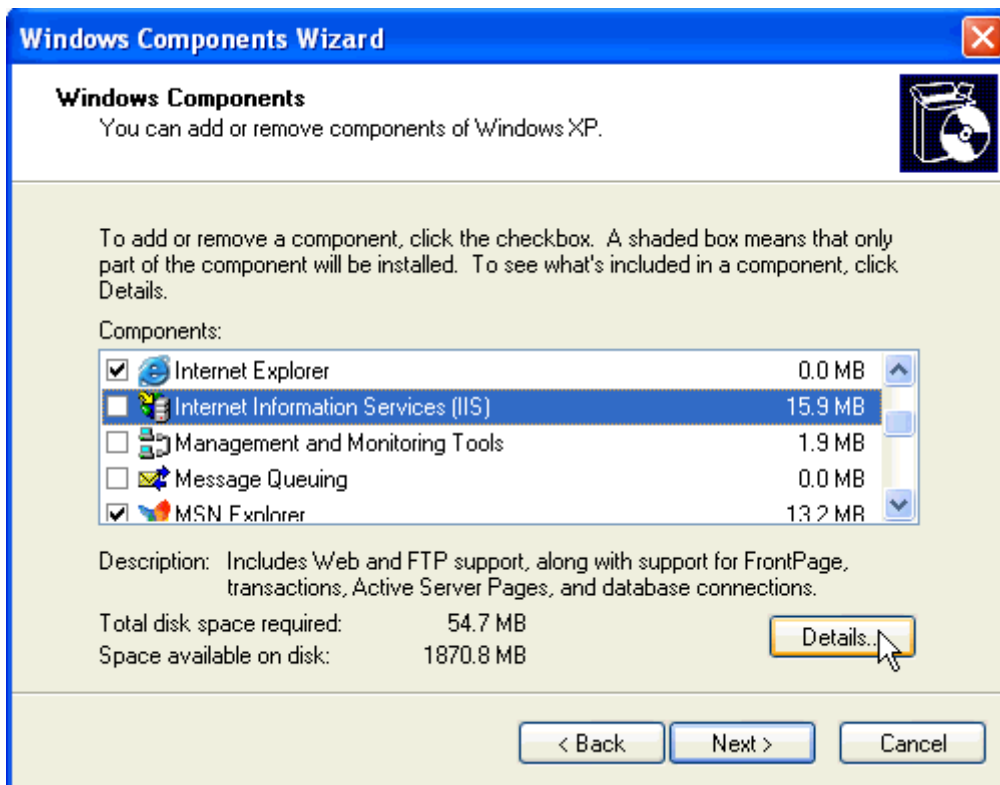
Steps To Install IIS Component

To install IIS component on your **Windows XP Pro** or **Windows 2000 Pro** follow these steps:

(Require Windows XP pro or Windows 2000 pro CD in you CDROM)

Obtain your Windows operating system CD/DVD

1. On the Start menu, click Control Panel.
2. Double-click Add or Remove Programs.
3. Click Add/Remove Windows Components.
4. Click Next
5. If prompted, insert your Windows XP pro CD or Windows 2000 pro CD
6. Click Internet Information Services (IIS) and then click Details.



7. Click Next.

That's it!

After Restarted your Computer, you can install AirePos POS Software into your computer.

If you still have problem or any question, please email support@airepos.com. AirePos support team will reply your email as soon as possible.